

## SXH and FXH N Technical Data

### Low lift truck

---

SXH 20/Li-Ion

FXH 20 N/Li-Ion

FXH 25 N/Li-Ion



SXH/FXH N Low Lift Truck  
At home in narrow aisles

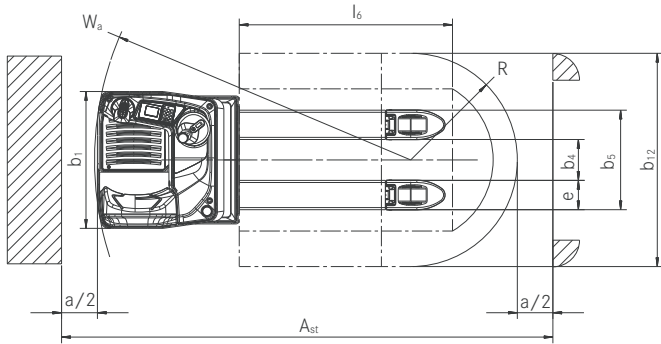
This specification sheet, which conforms to VDI guideline 2198, provides the technical values for the standard equipment only.  
Different tyres, other masts, the use of accessories, etc., may result in other values.



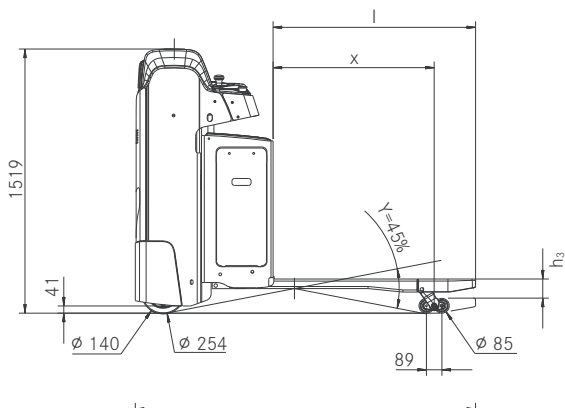
Distinguishing marks	STILL			STILL			STILL		
	SXH 20/Li-Ion			FXH 20 N/Li-Ion			FXH 25 N/Li-Ion		
1.1	Manufacturer								
1.2	Manufacturer's type designation								
1.3	Drive			Electric		Electric		Electric	
1.4	Control			Stand-on		Seated		Seated	
1.5	Rated capacity	Q	kg	2000		2000		2500	
1.6	Load centre	C	mm	600		600		800	
1.8	Load distance	X	mm	965 <sup>3</sup>		965 <sup>3</sup>		1415 <sup>3</sup>	
1.9	Wheelbase	Y	mm	1603 <sup>3</sup>		1622 <sup>3</sup>		2072 <sup>3</sup>	
2.1	Tare weight incl. Battery		kg	848 <sup>1</sup>		889 <sup>1</sup>		968 <sup>1</sup>	
2.2	Axle load with load		kg	1075/1773 <sup>1</sup>	drive/load end	1073/1816 <sup>1</sup>		1474/1994 <sup>1</sup>	
2.3	Axle load without load		kg	672/176 <sup>1</sup>	drive/load end	669/220 <sup>1</sup>		748/220 <sup>1</sup>	
3.1	Tyres			Polyurethane		Polyurethane		Polyurethane	
3.2	Tyre size	drive end	∅ x l	mm	254 x 102	254 x 102		254 x 102	
3.3	Tyre size	load end	∅ x l	mm	85 x 105 (2 x 85 x 80) <sup>2</sup>	85 x 105 (2 x 85 x 80) <sup>2</sup>		85 x 105 (2 x 85 x 80) <sup>2</sup>	
3.4	Castor wheel size		∅ x l	mm	2 x 140 x 50	2 x 140 x 50		2 x 140 x 50	
3.5	No. Of wheels (x = driven)				1 x 1/2 (1 x + 1/4) <sup>2</sup>	1 x + 1/2 (1 x + 1/4) <sup>2</sup>		1 x + 1/2 (1 x + 1/2) <sup>2</sup>	
3.6	Track	drive/load end	b <sub>10/11</sub>	mm	484/395	541/395		541/395	
4.4	Lift		h <sub>3</sub>	mm	125	125		125	
4.8	Seat height		h <sub>7</sub>	mm	-	1024		1024	
4.15	Fork height lowered		h <sub>13</sub>	mm	88	88		88	
4.19	Overall length		l <sub>1</sub>	mm	1956 <sup>1</sup>	1970 <sup>1</sup>		2420 <sup>1</sup>	
4.20	Length including forks		l <sub>2</sub>	mm	800 <sup>1</sup>	820 <sup>1</sup>		820 <sup>1</sup>	
4.21	External width		b <sub>1</sub>	mm	770	820		820	
4.22	Fork dimensions		s/e/l	mm	55/165/1150	55/165/1150		55/165/1600	
4.25	External fork width		b <sub>5</sub>	mm	520/540/560/580	520/540/560/680		520/540/560/680	
4.32	Floor clearance centre wheel base		m <sub>2</sub>	mm	30	30		30	
4.34	Working aisle width, pallet 800 x 1200 long		A <sub>st</sub>	mm	2215 <sup>1</sup>	2248 <sup>1</sup>		-	
4.35	Turning radius		W <sub>a</sub>	mm	1710/1780	1745/1815		2190/2260	
5.1	Driving speed	with/without load		km/h	10/12	10/12		10/12	
5.2	Lift speed	with/without load		m/s	0.036/0.043	0.039/0.048		0.024/0.033	
5.3	Lowering speed			m/s	0.064/0.06	0.077/0.078		0.074/0.053	
5.8	Max. gradeability kB 5			%	15/20	15/20		12/20	
5.10	Service brake				electro-magnetic	electro-magnetic		electro-magnetic	
6.1	Drive motor, capacity S2 = 60 min			kW	3.0	3.0		3.0	
6.2	Lift motor, capacity S2 = 60 min			kW	1.2	1.2		1.5	
6.3	Battery in accordance with DIN 43531/35/36 A, B, C, no				3PZS	3PZS		3PZS	
6.4	Battery voltage/rated capacity K <sub>s</sub>		V/Ah		24/300 Li-Ion: 23/205	24/300 Li-Ion: 23/205		24/300 Li-Ion: 23/205	
6.5	Battery weight		kg		290	290		290	
6.6	Energy consumption in accordance with VDI cycle		kWh/h		0.40	0.50		0.57	
8.1	Control				AC-Control	AC-Control		AC-Control	
10.7	Noise pressure level (driver's ear)		dB(A)		65	68		71	
	Body vibrations Acceleration in accordance with EN 13059		m/s <sup>2</sup>		0.74	0.5		0.5	

<sup>1</sup> For 3PzS battery  
<sup>2</sup> With tandem rollers  
<sup>3</sup> Initial lift lowered

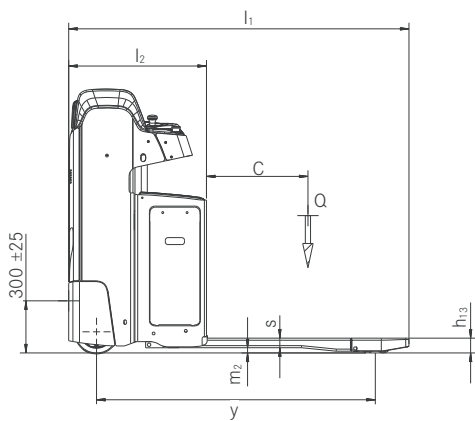
SXH Low Lift Truck  
 Technical Drawings



Top view



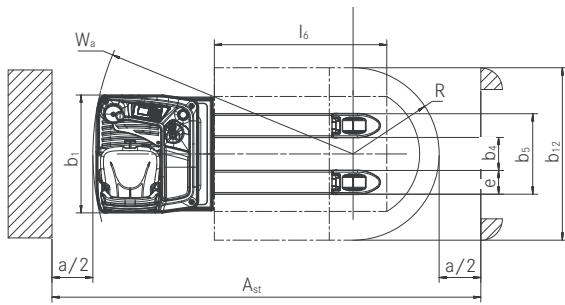
Side-view, initial lift lifted



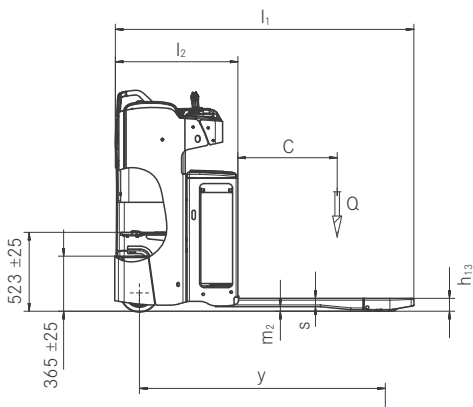
Side view

FXH N Low Lift Truck  
 Technical Drawings

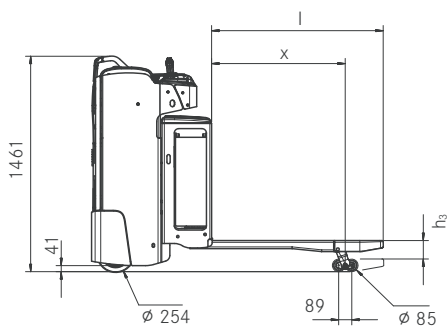
---



Top view



Side view



Side view

SXH Low Lift Truck  
Detailed Photos



Adjustable backrest for differing needs and applications



Dampened workspace for the driver with comfortable backrest for continued concentrated work



Steering wheel optionally on the left hand or right hand side



Also available with steering knob on the left side



Precise driving, lifting and lowering without changing grip with the standard joystick for fatigue free work



Optional load rest, additionally service as support bar to mount accessory, optional single accessory bar on the left hand side, right hand side or both sides

FXH N Low Lift Truck  
Detailed Photos



Up to 2 500 kg load capacity and maximum driving speeds of 12 km/h



Suspended seat, adjustable to the weight of the driver for maximum comfort



Optional joystick 4Plus to control lifting, lowering and driving without changing grip



Height-adjusting foot plate for individual operator adjustments



Battery change over the side as standard for highest availability and ergonomics



Optional automatic level compensation for bumpy floors and best driving characteristics

SXH/FXH N Low Lift Truck  
At home in narrow aisles



## SXH/FXH N Low Lift Truck At home in narrow aisles

---

**Top performance: High load capacity (2 0 t) and high driving speeds (up to 12 km/h)**

**Maximum availability: Battery capacities up to 500 Ah and optional Li-Ion technology**

**Flexible control concept: Steering unit optionally on the left hand or right hand side**



The SXH low lift pallet truck combines many economic benefits in a single truck. The SXH is the perfect solution for tough applications such as loading and unloading lorries and fast horizontal transport. It quickly moves load of up to 2 000 kg anywhere. With its full power it masters quick sprints with speed of up to 12 km/h thanks to its powerful drive. Also on gradients, it easily moves its loads thanks to the optional level compensation.

Beyond this, the strength of the SXH is its individuality: The workspace for the driver can be fitted with a steering wheel on the left hand or on the right hand side to adapt to individual user preferences. This individualisation increases safety in the warehouse, as the operator used the truck in the preferred way. Its compact dimensions that allow work in tightest spaces, the dampened stand-on platform and the optional battery change over the side round off the overall package and make the SXH a perfect helper in the warehouse.

**Top performance: High load capacity (2 5 t) and high driving speeds (up to 12 km/h)**

**Sensible precision: Joystick 4Plus and free view of the fork tips**

**Comfortable ergonomics: Height-adjusting foot plate and dampened seat for fatigue free work**

**Best availability: Lateral battery change by standard and optional Li-Ion technology**



Fast, compact and as strong as an ox - its virtues put the STILL FXH 20/25 N on the top of the list of the low lift pallet trucks. Thanks to the enormous load capacity of 2 500 kg for its class, this compact power pack also handles tough applications, e.g. in industrial production. In combination with its top speed of 12 km/h it handles a turnover of up to 162 tons per hour. The maximum battery capacity of 500 Ah provides more than enough energy for a whole shift. If you opt for the modern STILL lithium-ion technology and make use of short work breaks to charge the truck, this efficient low lift truck will

be ready for service around the clock. Thanks to the smart location of the colour display the operator is always informed about all important truck conditions such as the charging level of the battery and the residual service time. Also the selected driving programme is shown, and can be comfortably switched. After all, comfort is important for the FXH 20/25 N: The dampened seat and the height-adjusting foot plate guarantee an ergonomic driving experience, independently of the stature of the driver. This guarantees fatigue free work, also on long travel distances.



## Extensive Equipment

---

### Power

---

- Effective load handling: Driving speeds of up to 12 km/h and a load capacity of up to 2 500 kg
- Enough energy for multi-shift applications: High battery capacity of up to 500 Ah
- Powerful: Maintenance free 3-kW, 24-V rotary current drive motor
- Safe load handling thanks to robust frame with optional level compensation
- Always available: The lithium-ion battery bundles much energy and can be opportunity charged or completely charged at any time
- The right programme for any situation: ECO, BOOST or Blue-Q – from maximum turnover to maximum efficiency

### Precision

---

- Precise handling of all functions without changing grip of the joystick
- Fatigue free work: Smooth and precise steering
- Compact and agile: Easy work in tight spaces and narrow aisles
- Sensitive and intuitive control with the optional Joystick 4Plus
- Always an overview of everything: Display indicates battery condition, date and time

### Ergonomics

---

- The dampened workspace on the SXH reduces bumps from uneven floors
- Maximum operator comfort thanks to height-adjusting foot plate
- Easy control of all functions without changing grip with the Joystick 4Plus
- Ergonomic and flexible control concept: Steering wheel optionally on the left hand or right hand side, steering knob on left hand side only
- Minimised downtimes: Easy access to the maintenance points and quick battery change over the side
- Individual adjustments: Adjustable steering forces and reverse steering

### Compactness

---

- High pallet turnover: Thanks to compact dimensions flexible use
- Optimum use of warehouse space truck widths of only 770 mm and 820 mm

### Safety

---

- High cornering safety: Curve Speed Control automatically adjusts the cornering speed to the steering angle
- High stability on bumpy floors, thanks to the optional, automatic level compensation
- Safe access thanks to a large access step and low access height and grab handle
- Versatile and flexible access control with FleetManager 4.x

### Environmental Responsibility

---

- Up to seven per cent energy saving on pressing a button without obstructing performance: Blue-Q efficiency mode
- Low operation costs: Low energy consumption and long maintenance intervals
- Low noise emission due to very silent lift and drive motor
- Re-usable: Over 95 per cent of the used materials are recyclable

# SXH/FXH N Low Lift Truck Equipment Variants



	SXH 20	FXH 20 N	FXH 25 N	
<b>General</b>	Dampened seat	—	●	●
	Height-adjusting foot plate	—	●	●
	Dampened foot plate	●	—	—
	Height-adjusting back rest	●	—	—
	Colour display and control unit	●	●	●
	Integrated storage compartments	●	●	●
	Fully electric steering	●	●	●
	Fully electric steering with reverse steering	○	○	○
	Hydraulic controls by fixed joystick	●	●	●
	Hydraulic control by Joystick 4Plus	—	○	○
	Right-hand steering	○	—	—
	Left-hand steering knob	○	○	○
	Powerful rotary current drive motor	●	●	●
	Different fork lengths	○	○	○
	Cold store version	○	○	○
	Accessory bar on left side, right side or both sides	○	○	○
	DIN A4 writing pad	○	○	○
	Preparation for data terminal	○	○	○
	Data transfer by Bluetooth or GPRS	○	○	○
	Low access and grab handle	●	●	●
<b>Tyres</b>	Initial lift	●	●	●
	Single Polyurethane rollers	●	●	●
	Polyurethane tandem rollers	○	○	○
	Lubricable Polyurethane/tandem rollers	○	○	○
	Single Polyurethane drive wheel	●	●	●
	Threaded Polyurethane drive wheel	○	○	○
	Polyurethane drive wheel, soft	○	○	○
	Solid rubber drive wheel	○	○	○
<b>Safety</b>	Threaded solid rubber drive wheel	○	○	○
	Automatic level compensation	○	○	○
	Access (key)	●	●	●
	Access (Digicode)	○	○	○
	FleetManager access (Digicode)	○	○	○
	FleetManager access (STILL chip/customer card/customer chip)	○	○	○
	FleetManager: Shock detect	○	○	○
	Curve Speed Control: Cornering speed reduction	●	●	●
	Speed reduction with lowered forks	○	○	○
	Speed limit to 8 km/h	○	○	○
<b>Battery</b>	Speed limit to 10 km/h	○	○	○
	Load backrest	○	○	○
	Battery change over the side by roller track	○	●	●
	Battery compartment for battery capacity up to 375 Ah	●	●	●
	Battery compartment for battery capacity up to 500 Ah	○	○	○
Li-Ion battery 205 Ah	○	○	○	
Li-Ion battery 410 Ah	○	○	○	

● Standard ○ Optional — Not available

# STILL



STILL Materials Handling Ltd  
Aston Way  
Leyland Preston  
PR26 7UX  
Tel.: +44 (0)845 603 6827

STILL Materials Handling Ltd  
Jacks Way  
Hill Barton  
Business Park  
Clyst St. Mary  
Exeter  
EX5 1FG  
Tel.: +44 (0)345 603 6827

[info@still.co.uk](mailto:info@still.co.uk)

For further information please visit:

[www.still.co.uk](http://www.still.co.uk)



STILL is certified in the following areas: Quality management, occupational safety, environmental protection and energy management.



first in intralogistics